

May 2005

Interest Rate Derivatives

Index Derivatives

Equity Derivatives

BOURSE DE MONTRÉAL INC. - May 2005

Monthly Volumes

Year-to-Date Volumes

Month End Open Interest

| Interest Rate Derivatives | Volume | | % | Volume | | % | Volume | | % | Open Interest | | Open Interest | |
|---------------------------|------------------|------------------|--------------|------------------|---------------|-------------------|------------------|---------------|------------------|------------------|--------------|------------------|--------------|
| | May 2005 | May 2004 | | Apr. 2005 | Apr. 2005 | | Jan-May 2005 | Jan-May 2004 | | May 2005 | May 2004 | Apr. 2005 | Apr. 2005 |
| BAX | 778,717 | 688,031 | 13.2% | 1,077,272 | -27.7% | 4,356,179 | 2,823,113 | 54.3% | 338,139 | 228,437 | 48.0% | 325,241 | 4.0% |
| OBX | 21,080 | 19,050 | 10.7% | 44,875 | -53.0% | 114,589 | 94,755 | 20.9% | 94,485 | 73,415 | 28.7% | 83,255 | 13.5% |
| CGB | 613,844 | 348,272 | 76.3% | 225,656 | 172.0% | 1,792,108 | 1,165,511 | 53.8% | 171,389 | 90,842 | 88.7% | 137,222 | 24.9% |
| CGZ (6) | 12,463 | 43,076 | N/A | 9,796 | 27.2% | 67,989 | 43,076 | N/A | 5,687 | 5,590 | N/A | 3,739 | 52.1% |
| OBA (5) | N/A | 0 | N/A | N/A | N/A | 7 | 45 | -84.4% | N/A | 22 | N/A | 0 | N/A |
| ONX(3) | 0 | 0 | N/A | 0 | N/A | 0 | 1,480 | -100.0% | 0 | 0 | N/A | 0 | N/A |
| Sub Total | 1,426,104 | 1,098,429 | 29.8% | 1,357,599 | 5.0% | 6,330,872 | 4,127,980 | 53.4% | 609,700 | 398,306 | 53.1% | 549,457 | 11.0% |
| Index Derivatives | | | | | | | | | | | | | |
| SXF | 100,800 | 87,847 | 14.7% | 111,275 | -9.4% | 727,811 | 729,406 | -0.2% | 123,077 | 87,982 | 39.9% | 119,096 | 3.3% |
| SXA(2) | 55 | 16 | 243.8% | 1,807 | -97.0% | 5,468 | 217 | 2419.8% | 40 | 10 | N/A | 0 | N/A |
| SXB(2) | 34 | 25 | N/A | 30 | N/A | 64 | 74 | -13.5% | 20 | 62 | N/A | 30 | N/A |
| SXH(2) | 0 | 0 | N/A | 0 | N/A | 148 | 538 | -72.5% | 44 | 0 | N/A | 44 | 0.0% |
| SXY(2) | 1,166 | 15 | N/A | 3,578 | -67.4% | 9,071 | 371 | 2345.0% | 1,234 | 30 | 4013.3% | 1,836 | -32.8% |
| SXO (Long Term included) | 480 | 3,424 | -86.0% | 719 | -33.2% | 5,142 | 16,282 | -68.4% | 1,530 | 4,413 | -65.3% | 1,794 | -14.7% |
| Sub Total | 102,535 | 91,327 | 12.3% | 117,409 | -12.7% | 747,704 | 746,888 | 0.1% | 125,945 | 92,497 | 36.2% | 122,800 | 2.6% |
| ETF Options | | | | | | | | | | | | | |
| XIU (Long Term included) | 12,965 | 16,064 | -19.3% | 9,478 | 36.8% | 56,428 | 63,532 | -11.2% | 18,210 | 26,455 | -31.2% | 15,246 | 19.4% |
| XGD/XGL (4) | 8,027 | 4,530 | 1 | 7,819 | 2.7% | 43,534 | 23,524 | 1 | 12,510 | 4,864 | 2 | 11,057 | 13.1% |
| XFN (4) | 6,212 | 696 | 8 | 5,390 | 15.3% | 23,589 | 16,301 | 0 | 12,918 | 6,551 | 1 | 9,872 | 30.9% |
| XIT (4) | 765 | 600 | 0 | 145 | 427.6% | 2,151 | 6,299 | -1 | 1,342 | 2,498 | 0 | 982 | 36.7% |
| XEG (4) | 15,587 | 2,023 | 7 | 25,899 | -39.8% | 88,614 | 13,500 | 6 | 18,718 | 3,897 | 4 | 20,456 | -8.5% |
| Sub Total | 43,556 | 23,913 | 82.1% | 48,731 | -10.6% | 214,316 | 123,156 | 74.0% | 63,698 | 44,265 | 43.9% | 57,613 | 10.6% |
| Equity Derivatives | | | | | | | | | | | | | |
| Equity Options | 569,349 | 594,684 | -4.3% | 605,576 | -6.0% | 3,189,831 | 3,947,312 | -19.2% | 822,780 | 906,802 | -9.3% | 709,149 | 16.0% |
| Long Term Options | 47,072 | 41,218 | 14.2% | 54,791 | -14.1% | 297,202 | 306,055 | -2.9% | 242,503 | 163,025 | 48.8% | 345,529 | -29.8% |
| Sub Total | 616,421 | 635,902 | -3.1% | 660,367 | -6.7% | 3,487,033 | 4,253,367 | -18.0% | 1,065,283 | 1,069,827 | -0.4% | 1,054,678 | 1.0% |
| TOTAL | 2,188,616 | 1,849,571 | 18.3% | 2,184,106 | 0.2% | 10,779,925 | 9,251,391 | 16.5% | 1,864,626 | 1,604,895 | 16.2% | 1,784,548 | 4.5% |

BAX: Three-month Canadian Bankers' Acceptance Futures
 CGB: Ten-year Government of Canada Bond Futures
 CGZ: Five-year Government of Canada Bond Futures

OBX: Options on Three-month Canadian Bankers' Acceptance Futures
 OBA : Canada Government Bonds 5^{1/4} % June 2012
 ONX : 30-Day Overnight Repo Rate Futures

SXF: S&P Canada 60 Futures
 SXA : S&P/TSX Capped Gold Index
 SXB : S&P/TSX Capped Financials Index
 SXH : S&P/TSX Capped Information Technology Index
 SXY : S&P/TSX Capped Energy Index
 XIU: Options on iUnits S&P/TSX 60 Index Participation Fund
 XGD: iUnits S&P/TSX Capped Gold Index Fund
 XFN: iUnits S&P/TSX Capped Financials Index Fund
 XIT: iUnits S&P/TSX Capped Information Technology Index Fund
 XEG: iUnits S&P/TSX Capped Energy Index Fund

2 - Listed on April 29, 2002
 3 - Listed on June 14, 2002
 4 - Listed on April 21, 2003
 5 - Listed on June 23, 2003
 6 - Listed on June 03, 2004

All reported futures and options figures represent cleared data as provided by the Canadian Derivatives Clearing Corporation (CDCC).

BOURSE DE MONTRÉAL INC.

Historical Interest Rate Derivative Statistics

| Futures Contracts | 2005 YTD | | 2004 | | 2003 | | 2002 | | 2001 | | 2000 | |
|------------------------|------------------|----------------|-------------------|----------------|------------------|----------------|------------------|----------------|------------------|----------------|------------------|----------------|
| | Volume | Open Interest | Volume | Open Interest | Volume | Open Interest | Volume | Open Interest | Volume | Open Interest | Volume | Open Interest |
| BAX | 4,356,179 | 338,139 | 7,765,060 | 255,289 | 6,578,451 | 187,905 | 4,789,319 | 147,870 | 4,234,236 | 156,352 | 4,992,957 | 148,927 |
| CGB | 1,792,108 | 171,389 | 3,005,359 | 123,862 | 2,397,119 | 77,177 | 1,803,420 | 63,542 | 1,835,229 | 59,642 | 1,501,264 | 55,649 |
| CGZ | 67,989 | 5,687 | 218,069 | 4,292 | N/A | N/A | N/A | N/A | N/A | N/A | N/A | N/A |
| ONX | 0 | 0 | 1,480 | 0 | 6,055 | 0 | 6,817 | 400 | N/A | N/A | N/A | N/A |
| TOTAL | 6,216,276 | 515,215 | 10,989,968 | 383,443 | 8,981,625 | 265,082 | 6,599,556 | 211,812 | 6,069,465 | 215,994 | 6,494,443 | 204,576 |
| Futures Options | | | | | | | | | | | | |
| OBX | 114,589 | 94,485 | 265,937 | 31,371 | 341,245 | 31,572 | 57,950 | 17,050 | 89,339 | 3,602 | 249,976 | 51,730 |
| TOTAL | 114,589 | 94,485 | 265,937 | 31,371 | 341,245 | 31,572 | 57,950 | 17,050 | 89,351 | 3,602 | 249,976 | 51,730 |
| Bond Options | | | | | | | | | | | | |
| OBA | 7 | N/A | 613 | 59 | 3,754 | 17 | N/A | N/A | N/A | N/A | N/A | N/A |
| TOTAL | 7 | 0 | 613 | 59 | 4,498 | 17 | 3,774 | 219 | 20,369 | 601 | 8,877 | 273 |

BAX: Three-month Canadian Bankers' Acceptance Futures

CGB: Ten-year Government of Canada Bond Futures

CGZ: Five-year Government of Canada Bond Futures

ONX: 30-Day Overnight Repo Rate Futures

OBX: Options on Three-month Canadian Bankers' Acceptance Futures

OGB: Options on the Ten-year Government of Canada Bond Futures

Historical Index Derivative Statistics

| Futures Contracts | 2005 YTD | | 2004 | | 2003 | | 2002 | | 2001 | | 2000 | |
|-------------------------------------|----------------|----------------|------------------|----------------|------------------|----------------|------------------|---------------|------------------|---------------|------------------|---------------|
| | Volume | Open Interest | Volume | Open Interest | Volume | Open Interest | Volume | Open Interest | Volume | Open Interest | Volume | Open Interest |
| SXF | 727,811 | 123,077 | 1,906,038 | 97,725 | 1,681,994 | 106,641 | 1,450,860 | 67,625 | 1,174,328 | 53,541 | 1,272,244 | 66,861 |
| SXA | 5,468 | 40 | 774 | 357 | 1,454 | 104 | 739 | 0 | N/A | N/A | N/A | N/A |
| SXB | 64 | 20 | 186 | 0 | 110 | 0 | 187 | 0 | N/A | N/A | N/A | N/A |
| SXH | 148 | 44 | 726 | 0 | 6,890 | 500 | 7,071 | 1,375 | N/A | N/A | N/A | N/A |
| SXY | 9,071 | 1,234 | 2,524 | 1,980 | 452 | 0 | 85 | 0 | N/A | N/A | N/A | N/A |
| TOTAL | 742,562 | 124,415 | 1,910,248 | 100,062 | 1,690,900 | 107,245 | 1,458,942 | 69,000 | 1,174,328 | 53,541 | 1,272,244 | 66,861 |
| Options on Index Derivatives | | | | | | | | | | | | |
| SXO | 5,142 | 1,530 | 38,892 | 2,027 | 38,221 | 1,285 | 47,749 | 4,251 | 35,585 | 4,609 | 93,998 | 7,559 |
| XIU | 56,428 | 18,210 | 120,502 | 22,331 | 130,508 | 30,497 | 237,325 | 18,450 | 127,731 | 8,408 | 121,757 | 18,348 |
| XGD | 43,534 | 12,510 | 54,561 | 5,773 | 18,199 | 3,752 | N/A | N/A | N/A | N/A | N/A | N/A |
| XFN | 23,589 | 12,918 | 73,006 | 8,468 | 101,914 | 5,618 | N/A | N/A | N/A | N/A | N/A | N/A |
| XIT | 2,151 | 1,342 | 11,800 | 1,627 | 9,721 | 1,535 | N/A | N/A | N/A | N/A | N/A | N/A |
| XEG | 88,614 | 18,718 | 37,783 | 8,213 | 10,917 | 6,380 | N/A | N/A | N/A | N/A | N/A | N/A |
| TOTAL | 219,458 | 65,228 | 336,544 | 48,439 | 309,480 | 49,067 | 285,074 | 22,701 | 163,316 | 13,017 | 215,755 | 25,907 |

SXF: S&P Canada 60 Futures

XIU: Options on iUnits S&P/TSE 60 Index XIU: Options on iUnits S&P/TSE 60 Index Participation Fund

SXA, SXB, SXH, SXY: Futures on S&P/TSE sectorial indices

Historical Equity Derivative Statistics

| Equity Options | 2005 YTD | | 2004 | | 2003 | | 2002 | | 2001 | | 2000 | |
|-------------------|------------------|------------------|------------------|----------------|------------------|----------------|------------------|----------------|------------------|----------------|------------------|----------------|
| | Volume | Open Interest | Volume | Open Interest | Volume | Open Interest | Volume | Open Interest | Volume | Open Interest | Volume | Open Interest |
| Equity Options | 3,189,831 | 822,780 | 7,602,410 | 748,315 | 6,053,872 | 687,411 | 6,086,675 | 723,823 | 5,099,894 | 516,008 | 4,753,495 | 578,923 |
| Long Term Options | 297,202 | 242,503 | 709,408 | 240,522 | 301,379 | 131,443 | 165,802 | 66,119 | 103,249 | 46,034 | 107,535 | 54,037 |
| TOTAL | 3,487,033 | 1,065,283 | 8,311,818 | 988,837 | 6,355,251 | 687,411 | 6,252,477 | 723,823 | 5,203,143 | 562,042 | 4,861,030 | 632,960 |

BOURSE DE MONTRÉAL INC. - averages - May2005

| Trading Days | Interest Rate Derivatives | | Index and Equity Derivatives / ETF Options | | Sect. iUnits | |
|--------------|---------------------------|------|---|------|--------------|------|
| | 2005 | 2004 | 2005 | 2004 | 2005 | 2004 |
| | Total | 104 | 252 | 104 | 253 | 104 |
| January | 20 | 21 | 20 | 21 | 20 | |
| February | 20 | 20 | 20 | 20 | 20 | |
| March | 22 | 23 | 22 | 23 | 22 | |
| April | 21 | 21 | 21 | 21 | 21 | |
| May | 21 | 20 | 21 | 20 | 21 | 20 |
| June | | 22 | | 22 | | 22 |
| July | | 21 | | 21 | | 21 |
| August | | 21 | | 21 | | 21 |
| September | | 21 | | 21 | | 21 |
| October | | 20 | | 20 | | 20 |
| November | | 21 | | 22 | | 21 |
| December | | 21 | | 21 | | 21 |

| Interest Rate Derivatives | Ave. Daily volume | Daily Ave. Volume | % | Daily Ave. Volume | % | Daily Ave. Volume | Daily Ave. Volume | % | Daily Ave. Volume | % |
|---------------------------|-------------------|-------------------|--------------|-------------------|---------------|-------------------|-------------------|---------------|-------------------|--------------|
| | May-05 | May-04 | variation | Apr. 2005 | variation | Jan-May 2005 | Jan-May 2004 | variation | Jan-Apr. 2005 | variation |
| BAX | 37,082 | 34,402 | 7.8% | 51,299 | -27.7% | 41,886 | 26,887 | 55.8% | 43,102 | -2.8% |
| OBX | 1,004 | 953 | 5.4% | 2,137 | -53.0% | 1,102 | 902 | 22.1% | 1,127 | -2.2% |
| CGB | 29,231 | 17,414 | 67.9% | 10,746 | 172.0% | 17,232 | 11,100 | 55.2% | 14,196 | 21.4% |
| CGZ (6) | 593 | N/A | N/A | 466 | 27.2% | 654 | 2,154 | -69.6% | 669 | -2.3% |
| OBA (5) | N/A | 0 | N/A | N/A | N/A | 0 | 0 | -80.3% | 0 | N/A |
| ONX(3) | 0 | 0 | N/A | 0 | N/A | 0 | 14 | -100.0% | 0 | N/A |
| Sub Total (*) | 67,910 | 47,758 | 42.2% | 64,648 | 5.0% | 60,874 | 39,314 | 54.8% | 59,094 | 3.0% |
| Index Derivatives | 0 | | | 0 | | 0 | | | 0 | |
| SXF | 4,800 | 4,392 | 9.3% | 5,299 | -9.4% | 6,998 | 6,947 | 0.7% | 7,554 | -7.4% |
| SXA(2) | 3 | 1 | N/A | 86 | -97.0% | 53 | 2 | 2444.0% | 65 | -19.4% |
| SXB(2) | 2 | 1 | N/A | 1 | N/A | 1 | 1 | -12.7% | 0 | N/A |
| SXH(2) | 0 | 0 | N/A | 0 | N/A | 1 | 5 | -72.2% | 2 | -20.2% |
| SXY(2) | 56 | 1 | N/A | 170 | -67.4% | 87 | 4 | 2368.5% | 95 | -8.4% |
| SXO (Long Term included) | 23 | 171 | -86.6% | 34 | -33.2% | 49 | 155 | -68.1% | 56 | -12.0% |
| Sub Total (*) | 4,883 | 4,566 | 6.9% | 5,591 | -12.7% | 7,189 | 7,113 | 1.1% | 7,773 | -7.5% |
| ETF Options | 0 | | | 0 | | 0 | | | 0 | |
| XIU (Long Term included) | 617 | 803 | -23.1% | 451 | 36.8% | 543 | 605 | -10.3% | 524 | 3.6% |
| XGD/XGL (4) | 382 | 227 | 1 | 372 | 2.7% | 419 | 224 | 1 | 428 | -2.2% |
| XFN (4) | 296 | 35 | 8 | 257 | 15.3% | 227 | 155 | 0 | 209 | 8.3% |
| XIT (4) | 36 | 30 | 0 | 7 | 427.6% | 21 | 60 | -1 | 17 | 23.9% |
| XEG (4) | 742 | 101 | 6 | 1,233 | -39.8% | 852 | 129 | 6 | 880 | -3.2% |
| Sub Total (*) | 2,074 | 1,196 | 73.5% | 2,321 | -10.6% | 2,061 | 1,173 | 75.7% | 2,057 | 0.2% |
| Equity Derivatives | 0 | | | 0 | | 0 | | | 0 | |
| Equity Options | 27,112 | 29,734 | -8.8% | 28,837 | -6.0% | 30,671 | 37,593 | -18.4% | 31,572 | -2.9% |
| Long Term Options | 2,242 | 2,061 | 8.8% | 2,609 | -14.1% | 2,858 | 2,915 | -2.0% | 3,014 | -5.2% |
| Sub Total (*) | 29,353 | 31,795 | -7.7% | 31,446 | -6.7% | 33,529 | 40,508 | -17.2% | 34,586 | -3.1% |
| TOTAL (*) | 104,220 | 92,479 | 12.7% | 104,005 | 0.2% | 103,653 | 88,108 | 17.6% | 103,510 | 0.1% |

* - This number is based on the number of total traded contracts divided by the number of trading days during the same period

2 - Listed on April 29, 2002
3 - Listed on June 14, 2002

4 - Listed on April 21, 2003
5 - Listed on June 23, 2003

6 - Listed on May 03, 2004

All reported futures and options figures represent cleared and compensated data as provided by the Canadian Derivatives Clearing Corporation (CDCC).

Bourse de Montréal Inc. - Monthly Options Summary - May 2005

| Equity Options | | Volume | | | Value | | | Transactions | | | Open Interest 31-May-05 | |
|---------------------|--------------------------------------|---------|----------------|----------------|----------------|-------------------|-------------------|-------------------|---------------|---------------|----------------------------|------------------|
| | | Calls | Puts | Total | Calls | Puts | Total | Calls | Puts | Total | | |
| 1 | Abitibi-Consolidated Inc | A | 1,877 | 940 | 2,817 | 99,110 | 61,525 | 160,635 | 53 | 25 | 78 | 6,297 |
| 2 | Barrick Gold Corporation | ABX | 12,451 | 5,402 | 17,853 | 943,543 | 874,547 | 1,818,090 | 379 | 153 | 532 | 38,559 |
| 3 | ACE Aviation Holdings | ACE | 4,001 | 336 | 4,337 | 437,275 | 64,935 | 502,210 | 112 | 29 | 141 | 1,797 |
| 4 | Agnico-Eagle Mines Ltd. | AGE | 2,179 | 1,192 | 3,371 | 107,701 | 188,580 | 296,281 | 113 | 65 | 178 | 4,211 |
| 5 | Alcan Aluminium Limitee | AL | 10,052 | 7,751 | 17,803 | 1,400,136 | 2,391,060 | 3,791,196 | 790 | 414 | 1,204 | 22,608 |
| 6 | Ati Technologies Inc. | ATY | 8,544 | 3,769 | 12,313 | 743,842 | 402,980 | 1,146,822 | 507 | 166 | 673 | 15,360 |
| 7 | Bombardier Inc.Cl.B SV | BBD | 10,883 | 4,411 | 15,294 | 258,122 | 186,600 | 444,722 | 243 | 86 | 329 | 98,391 |
| 8 | BCE Inc. | BCE | 7,573 | 5,751 | 13,324 | 455,505 | 405,760 | 861,265 | 360 | 132 | 492 | 35,363 |
| 9 | Ballard Power Systems | BLD | 2,207 | 812 | 3,019 | 71,037 | 138,475 | 209,512 | 77 | 28 | 105 | 6,043 |
| 10 | Bank of Montreal | BMO | 5,935 | 1,497 | 7,432 | 798,195 | 142,755 | 940,950 | 301 | 85 | 386 | 30,731 |
| 11 | Brascan Corp. | BNN | 1,501 | 761 | 2,262 | 307,755 | 163,630 | 471,385 | 129 | 35 | 164 | 4,803 |
| 12 | Bank of Nova-Scotia | BNS | 16,875 | 4,415 | 21,290 | 1,694,013 | 500,815 | 2,194,828 | 620 | 180 | 800 | 49,449 |
| 13 | Biovail Corporation | BVF | 2,973 | 801 | 3,774 | 333,535 | 78,390 | 411,925 | 260 | 58 | 318 | 5,723 |
| 14 | CAE Inc. | CAE | 1,405 | 139 | 1,544 | 54,505 | 7,440 | 61,945 | 74 | 8 | 82 | 5,590 |
| 15 | Cameco Corp. | CCO | 7,285 | 3,408 | 10,693 | 1,921,851 | 832,175 | 2,754,026 | 821 | 324 | 1,145 | 10,376 |
| 16 | Celestica Inc. SV | CLS | 2,611 | 4,076 | 6,687 | 186,767 | 248,680 | 435,447 | 185 | 98 | 283 | 11,509 |
| 17 | CDN Imperial Bank of Comm. | CM | 12,953 | 7,268 | 20,221 | 3,944,708 | 1,394,195 | 5,338,903 | 522 | 352 | 874 | 30,915 |
| 18 | Canadian Natural Resources | CNQ/CNZ | 15,231 | 9,132 | 24,363 | 4,712,782 | 1,373,865 | 6,086,647 | 1,151 | 613 | 1,764 | 27,976 |
| 19 | Canadian National Railway | CNR | 3,447 | 1,609 | 5,056 | 729,830 | 229,505 | 959,335 | 219 | 100 | 319 | 5,599 |
| 20 | Canadian Sands Trust | COS | 1,845 | 544 | 2,389 | 272,340 | 138,125 | 410,465 | 100 | 54 | 154 | 1,827 |
| 21 | Canadian Pacific Railway | CP | 2,025 | 436 | 2,461 | 310,095 | 57,195 | 367,290 | 165 | 33 | 198 | 4,184 |
| 22 | Cognos | CSN | 1,755 | 885 | 2,640 | 277,785 | 196,490 | 474,275 | 183 | 85 | 268 | 2,157 |
| 23 | Dofasco Inc. | DFS | 3,717 | 590 | 4,307 | 234,570 | 83,945 | 318,515 | 162 | 45 | 207 | 13,652 |
| 24 | Encana Corporation | ECA/ECX | 23,184 | 12,491 | 35,675 | 5,384,490 | 2,066,932 | 7,451,422 | 1,255 | 614 | 1,869 | 51,324 |
| 25 | Energis Inc. | EME | 35 | 35 | 70 | 3,000 | 3,000 | 6,000 | 4 | 4 | 8 | 567 |
| 26 | Fonds Enerplus Ressources | ERF | 242 | 75 | 317 | 21,755 | 8,765 | 30,520 | 26 | 9 | 35 | 327 |
| 27 | Fiducie houillère canadienne Fording | FDG | 178 | 126 | 304 | 57,005 | 31,520 | 88,525 | 18 | 10 | 28 | 209 |
| 28 | Fairmont hotels and Resorts | FHR | 210 | 93 | 303 | 15,610 | 3,445 | 19,055 | 13 | 5 | 18 | 0 |
| 29 | FalconBridge Ltée | FL | 1,397 | 838 | 2,235 | 235,625 | 164,100 | 399,725 | 104 | 71 | 175 | 4,628 |
| 30 | Goldcorp Inc. | G | 6,548 | 1,170 | 7,718 | 485,589 | 97,640 | 583,229 | 351 | 59 | 410 | 11,402 |
| 31 | CGI Inc.(Groupe) Cl A SV | GIB | 2,820 | 962 | 3,782 | 55,106 | 60,000 | 115,106 | 79 | 39 | 118 | 3,555 |
| 32 | Glamis Gold Ltd. | GLG | 1,103 | 251 | 1,354 | 81,030 | 31,155 | 112,185 | 56 | 17 | 73 | 1,164 |
| 33 | Husky Energy Inc. | HSE | 4,997 | 423 | 5,420 | 577,000 | 58,980 | 635,980 | 140 | 26 | 166 | 3,876 |
| 34 | ING Canada | IIC | 196 | 35 | 231 | 12,460 | 6,175 | 18,635 | 16 | 4 | 20 | 239 |
| 35 | IAMGold Corp. | IMG | 3,717 | 514 | 4,231 | 136,967 | 46,355 | 183,322 | 153 | 42 | 195 | 4,893 |
| 36 | Imperial Oil Limited | IMO | 2,051 | 2,246 | 4,297 | 457,940 | 675,605 | 1,133,545 | 210 | 164 | 374 | 4,718 |
| 37 | Quebecor World SV | IQW | 782 | 135 | 917 | 156,855 | 15,225 | 172,080 | 46 | 8 | 54 | 855 |
| 38 | JDS Uniphase Canada Ltd. | JDU | 159 | 40 | 199 | 1,104 | 7,250 | 8,354 | 7 | 3 | 10 | 675 |
| 39 | Kinross | K | 4,575 | 1,688 | 6,263 | 177,707 | 205,950 | 383,657 | 168 | 62 | 230 | 17,212 |
| 40 | Loblaw Companies Ltd. | L | 848 | 615 | 1,463 | 185,800 | 156,730 | 342,530 | 114 | 51 | 165 | 2,338 |
| 41 | Manitoba Telecom Services | MBT | 1,937 | 662 | 2,599 | 174,195 | 70,350 | 244,545 | 125 | 39 | 164 | 4,132 |
| 42 | MDS Inc. | MDS | 442 | 91 | 533 | 41,160 | 18,170 | 59,330 | 33 | 10 | 43 | 1,416 |
| 43 | Manulife Financial | MFC | 3,649 | 1,546 | 5,195 | 527,315 | 202,115 | 729,430 | 293 | 100 | 393 | 8,113 |
| 44 | Magna International Cl A | MG | 1,992 | 1,096 | 3,088 | 500,420 | 720,490 | 1,220,910 | 189 | 125 | 314 | 3,000 |
| 45 | Meridian Gold | MNG | 1,100 | 270 | 1,370 | 119,375 | 73,575 | 192,950 | 68 | 21 | 89 | 1,549 |
| 46 | Molson Inc. | MOQ | 105 | 69 | 174 | 50,740 | 79,980 | 130,720 | 9 | 6 | 15 | 531 |
| 47 | Inco Ltd. | N | 11,741 | 7,177 | 18,918 | 2,232,383 | 1,280,311 | 3,512,694 | 995 | 537 | 1,532 | 15,118 |
| 48 | National Bank of Canada | NA | 2,586 | 8,498 | 11,084 | 469,640 | 1,277,985 | 1,747,625 | 172 | 65 | 237 | 11,255 |
| 49 | Norbord Inc. | NBD | 645 | 105 | 750 | 18,440 | 13,775 | 32,215 | 18 | 5 | 23 | 1,535 |
| 50 | Nova Chemicals Corp. | NCX | 6,687 | 1,187 | 7,874 | 580,715 | 468,000 | 1,048,715 | 221 | 92 | 313 | 6,151 |
| 51 | Noranda Inc. | NRD | 3,466 | 3,526 | 6,992 | 377,708 | 548,175 | 925,883 | 259 | 173 | 432 | 13,708 |
| 52 | Neurochem Inc. | NRM | 406 | 226 | 632 | 34,165 | 129,920 | 164,085 | 43 | 14 | 57 | 647 |
| 53 | Nortel Networks Corp. | NT | 40,329 | 15,646 | 55,975 | 1,108,770 | 939,520 | 2,048,290 | 972 | 340 | 1,312 | 172,454 |
| 54 | Novelis Inc. | NVL | 499 | 263 | 762 | 42,705 | 33,790 | 76,495 | 50 | 17 | 67 | 704 |
| 55 | Nexen Inc. | NXY/NXZ | 3,253 | 1,255 | 4,508 | 607,845 | 234,630 | 842,475 | 236 | 68 | 304 | 9,965 |
| 56 | Open Text Corp. | OTC | 1,277 | 685 | 1,962 | 151,960 | 74,190 | 226,150 | 103 | 49 | 152 | 2,541 |
| 57 | Pan American Silver Corp. | PAA | 583 | 256 | 839 | 49,155 | 25,335 | 74,490 | 39 | 18 | 57 | 644 |
| 58 | Petro-Canada Com/Var | PCA | 11,588 | 7,773 | 19,361 | 2,523,795 | 1,313,072 | 3,836,867 | 906 | 471 | 1,377 | 15,471 |
| 59 | Precision Drilling Corp. | PD | 3,743 | 3,191 | 6,934 | 1,223,475 | 660,140 | 1,883,615 | 309 | 224 | 533 | 9,818 |
| 60 | Placer Dome Inc. | PDG | 12,332 | 5,757 | 18,089 | 1,086,057 | 969,405 | 2,055,462 | 612 | 221 | 833 | 40,539 |
| 61 | Groupe Jean Coutu | PJC | 941 | 324 | 1,265 | 104,805 | 16,780 | 121,585 | 64 | 19 | 83 | 1,644 |
| 62 | Potash Corp. Of Saskatchewan Inc. | POT | 1,255 | 1,047 | 2,302 | 335,325 | 347,145 | 682,470 | 114 | 100 | 214 | 1,945 |
| 63 | QLT Phototherapeutics Inc. | QLT | 1,503 | 1,040 | 2,543 | 90,162 | 154,625 | 244,787 | 130 | 69 | 199 | 5,017 |
| 64 | Rogers Communication Cl B | RCI | 1,479 | 859 | 2,338 | 241,525 | 98,773 | 340,298 | 82 | 43 | 125 | 3,064 |
| 65 | RioCan Real Estate Investement | REI | 22 | 50 | 72 | 575 | 4,250 | 4,825 | 3 | 3 | 6 | 72 |
| 66 | Research In Motion | RIM | 8,963 | 6,642 | 15,605 | 4,692,944 | 2,525,595 | 7,218,539 | 1,326 | 855 | 2,181 | 8,872 |
| 67 | Royal Bank of Canada | RY | 15,397 | 5,172 | 20,569 | 4,172,985 | 915,335 | 5,088,320 | 861 | 323 | 1,184 | 38,973 |
| 68 | Corporation Shoppers Drug Mart | SC | 936 | 144 | 1,080 | 105,015 | 10,935 | 115,950 | 75 | 8 | 83 | 791 |
| 69 | Shaw Communications | SJR | 156 | 34 | 190 | 24,765 | 170 | 24,935 | 11 | 2 | 13 | 1,394 |
| 70 | Sun Life Financial | SLF | 5,930 | 1,289 | 7,219 | 1,001,930 | 176,025 | 1,177,955 | 334 | 70 | 404 | 16,542 |
| 71 | Suncor Energy Inc. | SU | 15,290 | 8,513 | 23,803 | 3,078,151 | 1,290,050 | 4,368,201 | 994 | 516 | 1,510 | 18,864 |
| 72 | Sierra Wireless Inc. | SW | 1,586 | 257 | 1,843 | 129,260 | 42,755 | 172,015 | 137 | 27 | 164 | 2,843 |
| 73 | Telus Corp. | T | 3,579 | 651 | 4,230 | 684,105 | 82,685 | 766,790 | 296 | 65 | 361 | 3,852 |
| 74 | TransAlta Corporation | TA | 1,436 | 454 | 1,890 | 159,740 | 53,935 | 213,675 | 97 | 22 | 119 | 3,444 |
| 75 | Toronto-Dominion Bank | TD | 13,826 | 5,177 | 19,003 | 2,441,840 | 472,215 | 2,914,055 | 812 | 198 | 1,010 | 28,594 |
| 76 | Teck Cominco Ltd. | TEK | 12,378 | 5,674 | 18,052 | 1,656,120 | 1,050,310 | 2,706,430 | 746 | 282 | 1,028 | 13,225 |
| 77 | Canadian Pacific Ships | TEU | 11,028 | 799 | 11,827 | 1,494,030 | 47,565 | 1,541,595 | 539 | 48 | 587 | 7,400 |
| 78 | Talisman Energy Inc. | TLM | 12,138 | 3,676 | 15,814 | 2,800,480 | 674,100 | 3,474,580 | 766 | 231 | 997 | 14,218 |
| 79 | Thomson Corporation | TOC | 3,586 | 1,360 | 4,946 | 335,610 | 97,915 | 433,525 | 195 | 71 | 266 | 5,487 |
| 80 | TransCanada Corp. | TRP | 5,814 | 4,940 | 10,754 | 550,650 | 732,375 | 1,283,025 | 225 | 136 | 361 | 25,699 |
| 81 | Westjet Airlines Ltd. | WJA | 1,076 | 610 | 1,686 | 78,885 | 57,740 | 136,625 | 72 | 36 | 108 | 1,353 |
| 82 | Western Silver Corp. | WTC | 137 | 15 | 152 | 5,450 | 4,775 | 10,225 | 12 | 2 | 14 | 112 |
| 83 | TSX Group | X | 1,426 | 179 | 1,605 | 205,430 | 25,615 | 231,045 | 91 | 15 | 106 | 1,485 |
| Sous - total | | | 420,609 | 195,812 | 616,421 | 64,649,845 | 31,812,090 | 96,461,935 | 23,920 | 10,088 | 34,008 | 1,065,283 |

NOTE : Long term Options included in the volume

Listed on April 25, 2005

Bourse de Montréal Inc. - Monthly Options Summary - May 2005

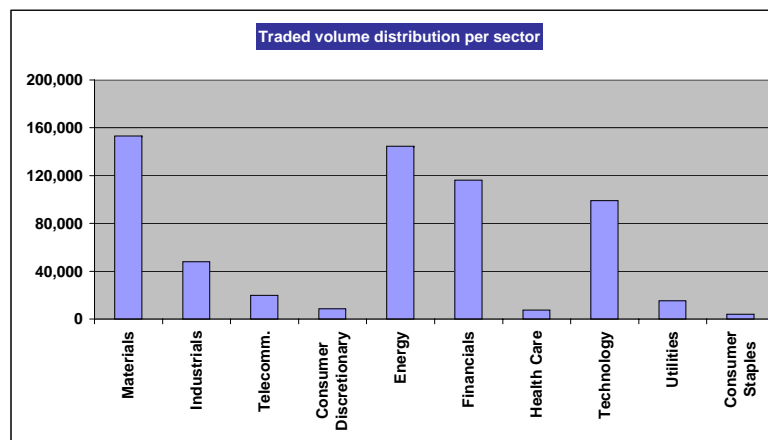
| Futures/Bond/Index/iUnits | | | Volume | | | Value | | | Transactions | | | Open Interest | |
|---------------------------|-----------------------|--------------------|----------------|----------------|----------------|-------------------|-------------------|--------------------|---------------|---------------|---------------|------------------|--------|
| | | | Calls | Puts | Total | Calls | Puts | Total | Calls | Puts | Total | 31-May-05 | |
| 1 | BAX Options | BAX Options | OBX | 6,200 | 14,880 | 21,080 | 614,375 | 4,422,000 | 5,036,375 | 17 | 44 | 61 | 94,485 |
| 2 | Cda Bond Options | JN 2012 5.25 | OBA | | | | | | | | | | |
| 3 | S+P/CDA 60 Index | S+P/CDA 60 Index | SXO | 121 | 359 | 480 | 75,790 | 160,330 | 236,120 | 12 | 26 | 38 | 1,530 |
| 4 | Units S&P/TSE 60 fund | i60 Units | XIU | 4,904 | 8,061 | 12,965 | 682,850 | 1,520,315 | 2,203,165 | 191 | 184 | 375 | 18,210 |
| | | Energy | XEG | 6,950 | 8,637 | 15,587 | 1,316,075 | 1,420,120 | 2,736,195 | 205 | 199 | 404 | 18,718 |
| | | Financial Services | XFN | 2,453 | 3,759 | 6,212 | 511,505 | 357,845 | 869,350 | 43 | 48 | 91 | 12,918 |
| | | Gold | XGD/XGL | 5,292 | 2,735 | 8,027 | 841,948 | 678,075 | 1,520,023 | 197 | 110 | 307 | 12,510 |
| | | IT | XIT | 415 | 350 | 765 | 18,225 | 6,500 | 24,725 | 12 | 6 | 18 | 1,342 |
| Sub Total | | | 26,335 | 38,781 | 65,116 | 4,060,768 | 8,565,185 | 12,625,953 | 677 | 617 | 1,294 | 159,713 | |
| Grand Total | | | 446,944 | 234,593 | 681,537 | 68,710,613 | 40,377,275 | 109,087,888 | 24,597 | 10,705 | 35,302 | 1,224,996 | |

NOTE : Leaps included

Bourse de Montréal Inc. - Canadian Equity Options Market Trading Volume by Sector

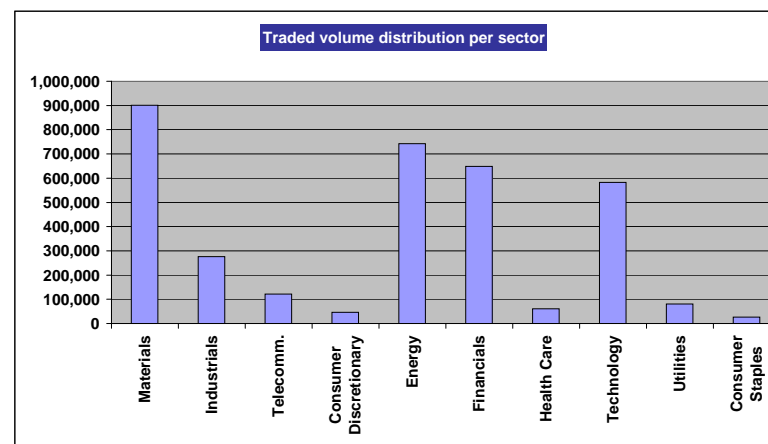
May 2005

| Sectors | Volume May | Trade Volume (%) | Volume Apr. | Change Volume May - Mar. (%) |
|------------------------|----------------|------------------|-------------|------------------------------|
| Materials | 153,239 | 24.86% | 166,819 | -8.14% |
| Industrials | 47,984 | 7.78% | 45,890 | 4.56% |
| Telecommunications | 19,927 | 3.23% | 14,641 | 36.10% |
| Consumer Discretionary | 8,527 | 1.38% | 5,567 | 53.17% |
| Energy | 144,691 | 23.47% | 166,420 | -13.06% |
| Financials | 116,183 | 18.85% | 118,186 | -1.69% |
| Health Care | 7,482 | 1.21% | 11,011 | -32.05% |
| Technology | 99,163 | 16.09% | 107,273 | -7.56% |
| Utilities | 15,243 | 2.47% | 17,205 | -11.40% |
| Consumer Staples | 3,982 | 0.65% | 7,355 | -45.86% |
| Total | 616,421 | 100.00% | | |



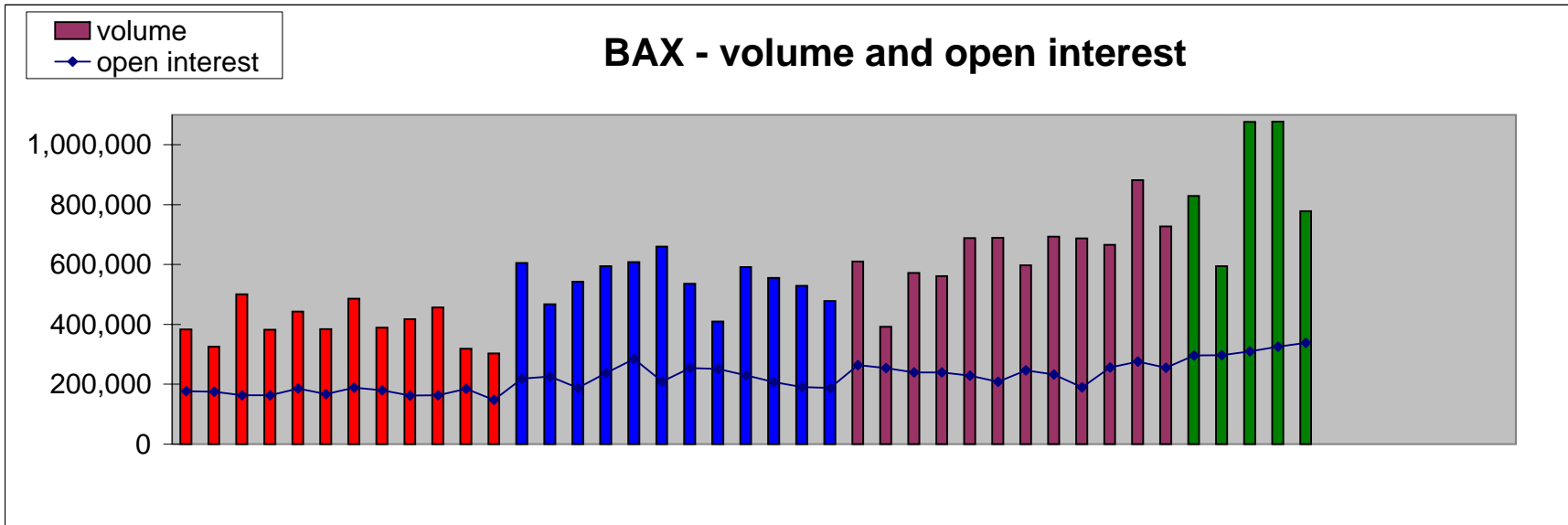
January to May 2005

| Sectors | Volume Jan-May | Trade Volume (%) | Volume Jan-Apr. | Change Volume Jan-May / Jan-Apr. |
|------------------------|------------------|------------------|-----------------|----------------------------------|
| Materials | 901,351 | 25.85% | 748,112 | 20.48% |
| Industrials | 276,353 | 7.93% | 228,369 | 21.01% |
| Telecommunications | 121,582 | 3.49% | 101,655 | 19.60% |
| Consumer Discretionary | 45,956 | 1.32% | 37,429 | 22.78% |
| Energy | 742,590 | 21.30% | 597,899 | 24.20% |
| Financials | 648,703 | 18.60% | 532,520 | 21.82% |
| Health Care | 60,186 | 1.73% | 52,704 | 14.20% |
| Technology | 582,558 | 16.71% | 483,395 | 20.51% |
| Utilities | 80,880 | 0.77% | 65,637 | 23.22% |
| Consumer Staples | 26,874 | 2.32% | 22,892 | 17.39% |
| Total | 3,487,033 | 100.00% | | |

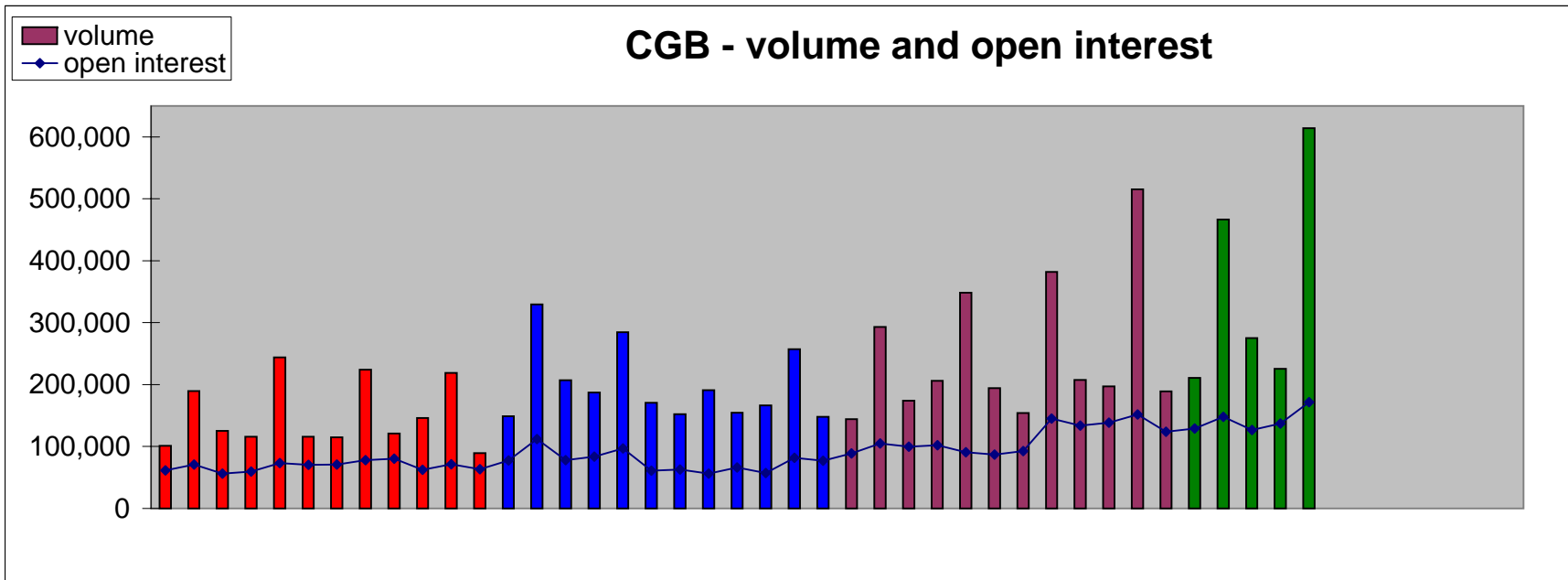


* Sector breakdowns are based on the S&P/TSX Indices

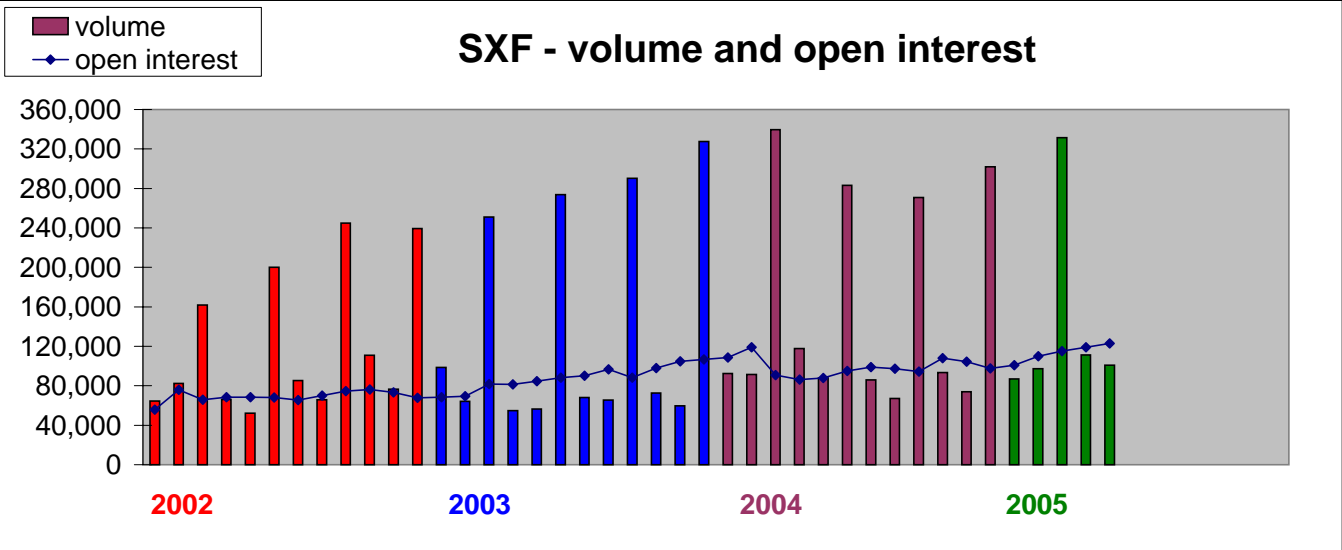
BAX Three-Month Canadian Bankers' Acceptance Futures



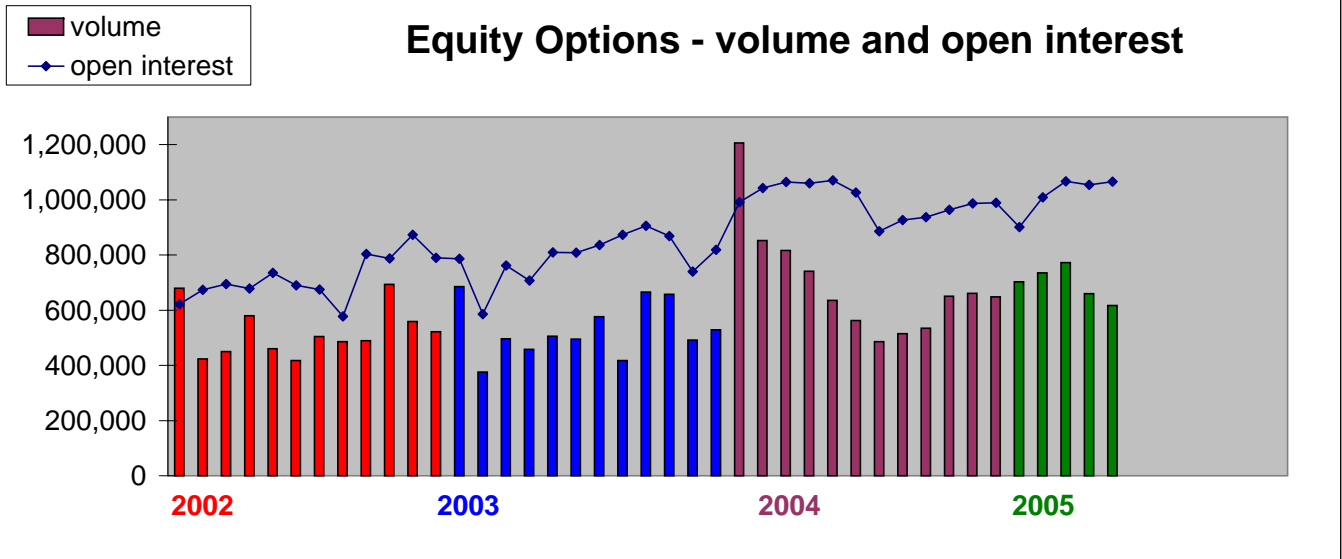
CGB Ten-Year Government of Canada Bond Futures



SXF S&P Canada 60 Index Futures



Equity Options



DELIVERABLE BOND ISSUES AND THEIR CONVERSION FACTORS
(As of June 9, 2005)

TEN-YEAR GOVERNMENT OF CANADA BOND FUTURES - CGB

| Government of Canada Bonds | | Outstanding (CAN \$ million) | Mar-05 | Jun-05 | Sep-05 | Dec-05 |
|--|--------------|---------------------------------|---------------|---------------|---------------|---------------|
| Coupon | Maturity | | | | | |
| 5 1/4% | June 1, 2013 | 12,000 | 0.9529 | S/O | S/O | S/O |
| 5% | June 1, 2014 | 10,867 | 0.9312 | 0.9326 | 0.9342 | 0.9356 |
| 4 1/2% | June 1, 2015 | 7,300 | 0.8884 | 0.8904 | 0.8926 | 0.8946 |
| TOTAL OUTSTANDING DELIVERABLE BONDS | | | 30,167 | 18,167 | 18,167 | 18,167 |

(CAN \$ million)

Conversion factors computed with a yield equal to 6%.

TWO-YEAR GOVERNMENT OF CANADA BOND FUTURES - CGZ

| Government of Canada Bonds | | Outstanding (CAN \$ million) | Mar-05 | Jun-05 | Sep-05 | Dec-05 |
|----------------------------|--------------------|---------------------------------|---------------|---------------|---------------|---------------|
| Coupon | Maturity | | | | | |
| 3 1/4% | December 1st, 2006 | 6,000 | 0.9611 | S/O | S/O | S/O |
| 7% | December 1st, 2006 | 5,866 | 1.0141 | S/O | S/O | S/O |
| 3% | June 1st, 2007 | 5,600 | 0.9442 | 0.9508 | 0.9576 | S/O |
| 7 1/4% | June 1st, 2007 | 7,030 | 1.0232 | 1.0230 | 1.0177 | S/O |
| 4 1/2% | September 1st 2007 | 9,725 | 0.9688 | 0.9721 | 0.9753 | 0.9821 |
| 6% | June 1st, 2008 | 5,010 | S/O | S/O | 1.0000 | 0.9999 |
| 4 1/4% | September 1st 2008 | 11,400 | S/O | S/O | S/O | 0.9599 |
| (CAN \$ million) | | | 34,221 | 22,355 | 27,365 | 26,135 |

Conversion factors computed with a yield equal to 6%.

Note: This table is subject to the Rules of Bourse de Montréal Inc. and of the Canadian Derivatives Clearing Corporation.